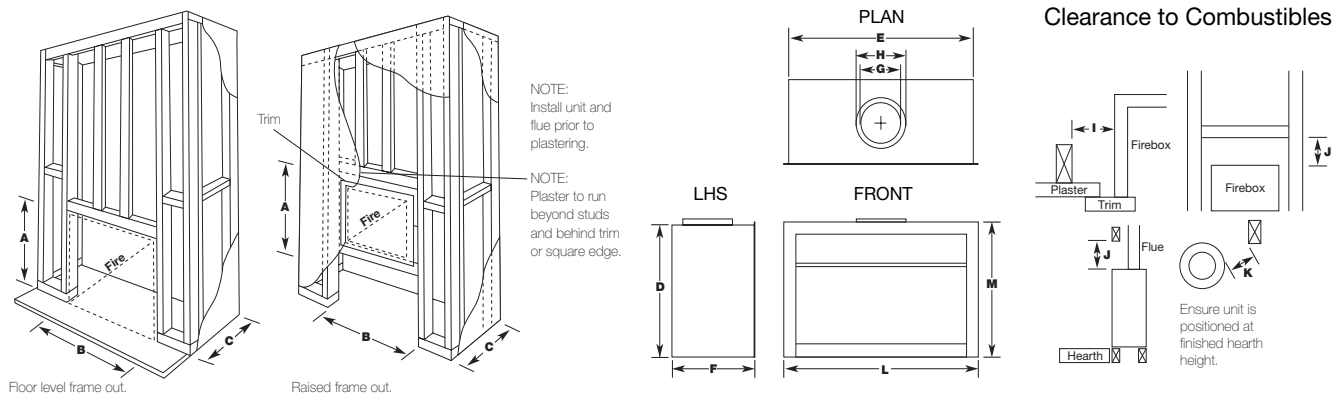


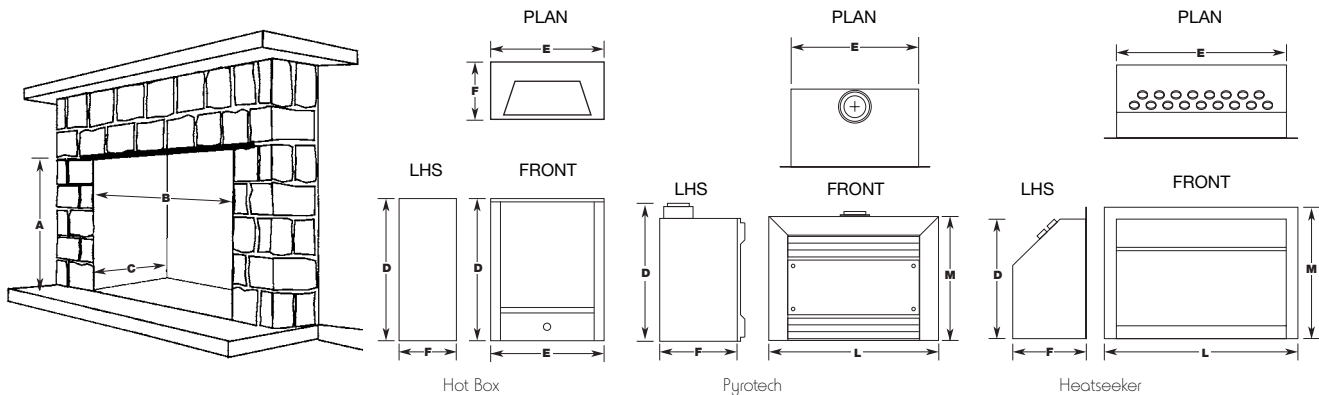
HEATSEEKER



	A	B	C	D	E	F	G	H	I	J	K	L	M	NG Mj/h	LP Mj/h	GPO REQ'D	VENTILATION
600	750	750	450	650	675	415	150	200	25	100	25	740	670	37	31	YES	18000mm2
700	750	850	450	650	775	415	150	200	25	100	25	840	670	37	31	YES	18000mm2
850	750	1000	450	650	930	415	200	250	25	100	25	990	670	39	36	YES	32000mm2
1000	750	1150	450	650	1075	415	200	250	25	100	25	1140	670	39	36	YES	32000mm2
1500	1030	1650	450	930	1575	415	225	275	25	100	25	1630	670	49	49	YES	49000mm2

Also available in inbuilt configuration for working masonry fireplaces.

Refer to TRIMS section for 4 sided trim dimensions



HEATSEEKER 600	610	620	380	605	610	370	740	670	37	31	YES	40000mm2
HEATSEEKER 700	610	720	380	605	710	370	840	670	37	31	YES	40000mm2
HEATSEEKER 850	610	870	380	605	860	370	990	670	39	36	YES	40000mm2
HEATSEEKER 1000	610	1020	380	605	1005	370	1140	670	39	36	YES	40000mm2



Head Office, Factory and Showroom:

Scoresby VIC
1340 Ferntree Gully Road
T 03 8706 2000
F 03 8706 2001

Free on site advisory service
www.realflame.com.au

Richmond VIC
300 Swan Street
T 03 9428 4443

Norwood SA
173 Magill Road
T 08 8132 0371

Dandenong Sth VIC
3/328 Sth Gippsland Hwy
T 03 9702 7853

Osborne Park WA
47-53 McDonald Street
T 08 9444 9900

Geelong VIC
2a Gordon Avenue
T 03 5229 0844

Milton QLD
46 Douglas Street
T 07 3368 2011

Chatswood NSW
546 Pacific Highway
T 02 8905 0189

Fyshwick ACT
88 Wollongong Street
T 02 6280 5522

Miranda NSW
36 Kareena Road
T 02 8513 6202

Ulverstone TAS
31a Victoria Street
T 03 6425 4440

Warranty: Provided your Real Flame Gas Fire is installed by a licensed Gas Fitter in accordance with our installation instructions and any other relevant codes and operated in accordance with our operating manual, your firebox is warranted for a period of 15 years and all other parts for 2 years from date of purchase. Refer to our web site or our IOM's for a comprehensive warranty.

Available from:

A professional resource and buyers guide

Heatseeker 2017

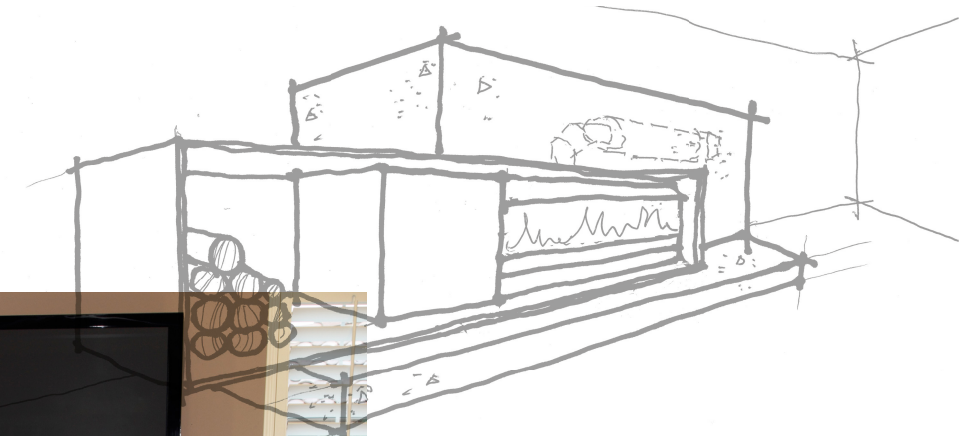


HEATSEEKER

600 | 700 | 850 | 1000 | 1500

HEATING ON A GRAND SCALE

Create the warmth and atmosphere of an open fire with the convenience and cleanliness of gas. The Heatseeker delivers optimum radiant and fan assisted convected heat. Offering total design flexibility ranging from old world to traditional or contemporary finishes. The Heatseeker fire is available in five convenient sizes that are ideal for new or existing fireplace applications.



- 🔥 Natural gas or LPG
- 🔥 Conventional or Power flue
- 🔥 Pebbles or Coals and Logs
- 🔥 New or existing applications
- 🔥 Old world, traditional or contemporary
- 🔥 Convected plus radiant heat, heats up to 45m²
- 🔥 Conceived, designed, researched, developed and built in Australia