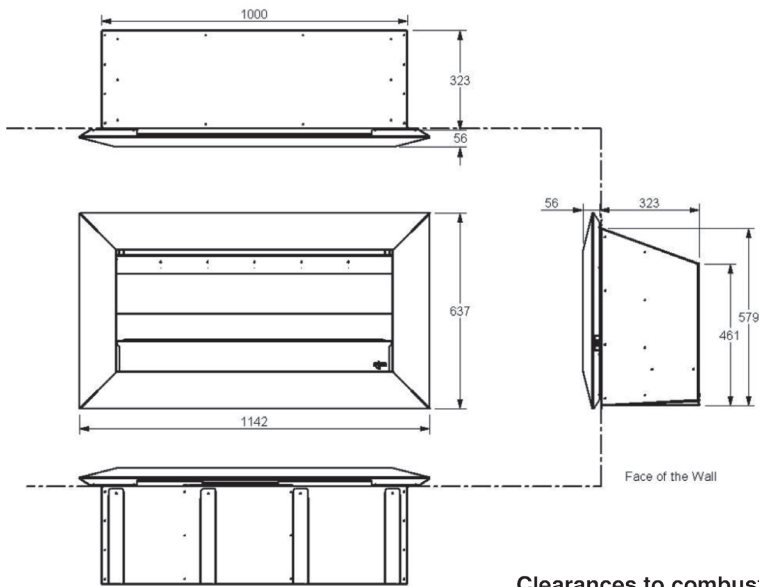
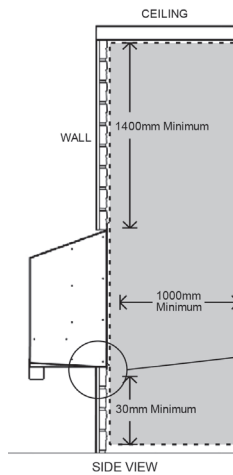


EXURO

1.1 Product dimensions: (mm)

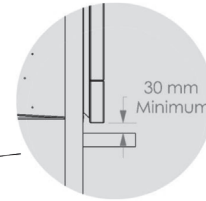


Clearances to combustibles:



Minimum clearance distance between a combustible ceiling and the fascia must be no less than 1400mm.

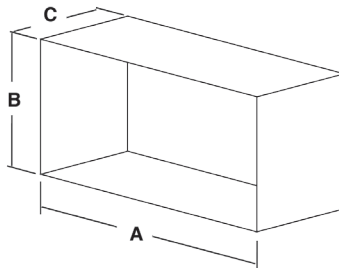
Warning: Under no circumstances should any object such as people, pets, furniture, etc. be closer than 1 metre in front of the IO1000.



Warning: Do not install a TV above this fire under any circumstances.

Cavity Dimensions:

Minimum Cavity Dimensions		
A	B	C
1010 mm	585 mm	330 mm



Head Office, Factory and Showroom:

Scoresby VIC
1340 Femtree Gully Road
T 03 8706 2000
F 03 8706 2001

Free on site advisory service
www.realflame.com.au

Richmond VIC
300 Swan Street
T 03 9428 4443

Norwood SA
173 Magill Road
T 08 8132 0371

Dandenong Sth VIC
3/328 Sth Gippsland Hwy
T 03 9702 7853

Osborne Park WA
47-53 McDonald Street
T 08 9444 9900

Geelong VIC
2a Gordon Avenue
T 03 5229 0844

Milton QLD
46 Douglas Street
T 07 3368 2011

Chatswood NSW
546 Pacific Highway
T 02 8905 0189

Fyshwick ACT
88 Wollongong Street
T 02 6280 5522

Miranda NSW
36 Kareena Road
T 02 8513 6202

Ulverstone TAS
31a Victoria Street
T 03 6425 4440

Warranty: Provided your Real Flame Gas Fire is installed by a licensed Gas Fitter in accordance with our installation instructions and any other relevant codes and operated in accordance with our operating manual, your firebox is warranted for a period of 15 years and all other parts for 2 years from date of purchase. Refer to our web site or our IOM's for a comprehensive warranty.

Available from:

A professional resource and buyers guide

Exuro 2017



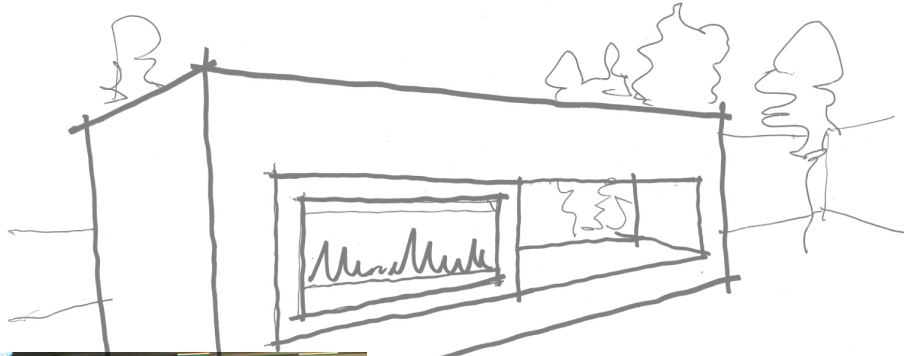
real flame
Leaders in
Fireplace
Technology



EXURO

BRING SOME HEAT AND AMBIENCE TO THE PARTY

The Exuro will not only look great in your alfresco or outdoor entertaining area, but it will also bring some warmth to the party. With its sleek looks and optional black or stainless steel bevelled trims it is sure to impress your guests. The Exuro can be built into any environment to suit the surrounding finishes and as it doesn't need a flue there are virtually no boundaries when looking for the ideal location for installation.



- Outdoor Heating
- Modern or Contemporary
- New Application
- No Flue Required
- Natural Gas or LPG
- Black pebble
- Black or Stainless surround
- Electronic Ignition

real flame
Leaders in
Fireplace
Technology